

I hereby certify this document as the official Zoning Overlay Map for the Village of South Blooming Grove.

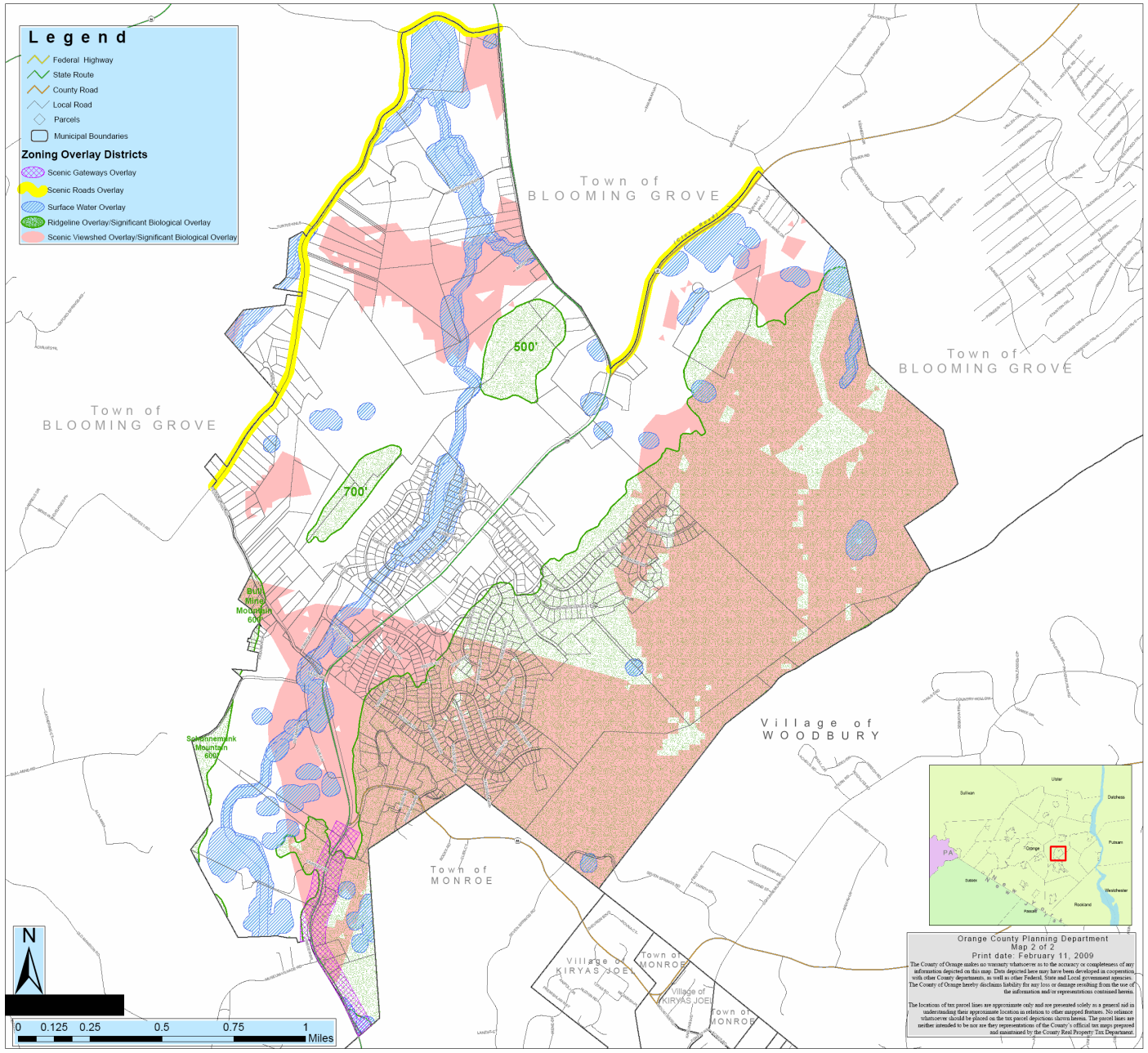
Signature _____ Title _____ Date _____

South Blooming Grove, New York Zoning Overlay Map Adopted February 9, 2009



Legend

- Federal Highway
 - State Route
 - County Road
 - Local Road
 - Parcels
 - Municipal Boundaries
- Zoning Overlay Districts**
- Scenic Gateways Overlay
 - Scenic Roads Overlay
 - Surface Water Overlay
 - Ridgeline Overlay/Significant Biological Overlay
 - Scenic Viewshed Overlay/Significant Biological Overlay



Orange County Planning Department
Map 2 of 2
Print date: February 11, 2009

The County of Orange makes no warranty whatsoever as to the accuracy or completeness of any information depicted on this map. Data depicted here may have been developed in cooperation with other County Departments, as well as other Federal, State and Local government agencies. The County of Orange hereby disclaims liability for any loss or damage resulting from the use of the information and/or representations contained herein.

The locations of tax parcel lines are approximate only and are presented solely as a general aid in understanding their approximate location in relation to other mapped features. No reliance whatsoever should be placed on the tax parcel depiction shown herein. The parcel lines are further intended to be not any representation of the County's official tax maps prepared and maintained by the County Real Property Tax Department.