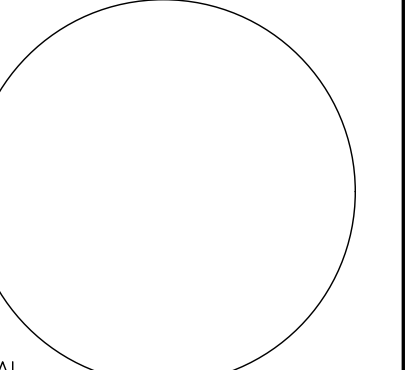


1 BASEMENT FLOOR PLAN
 A-102 SCALE: 3/16" = 1'-0"

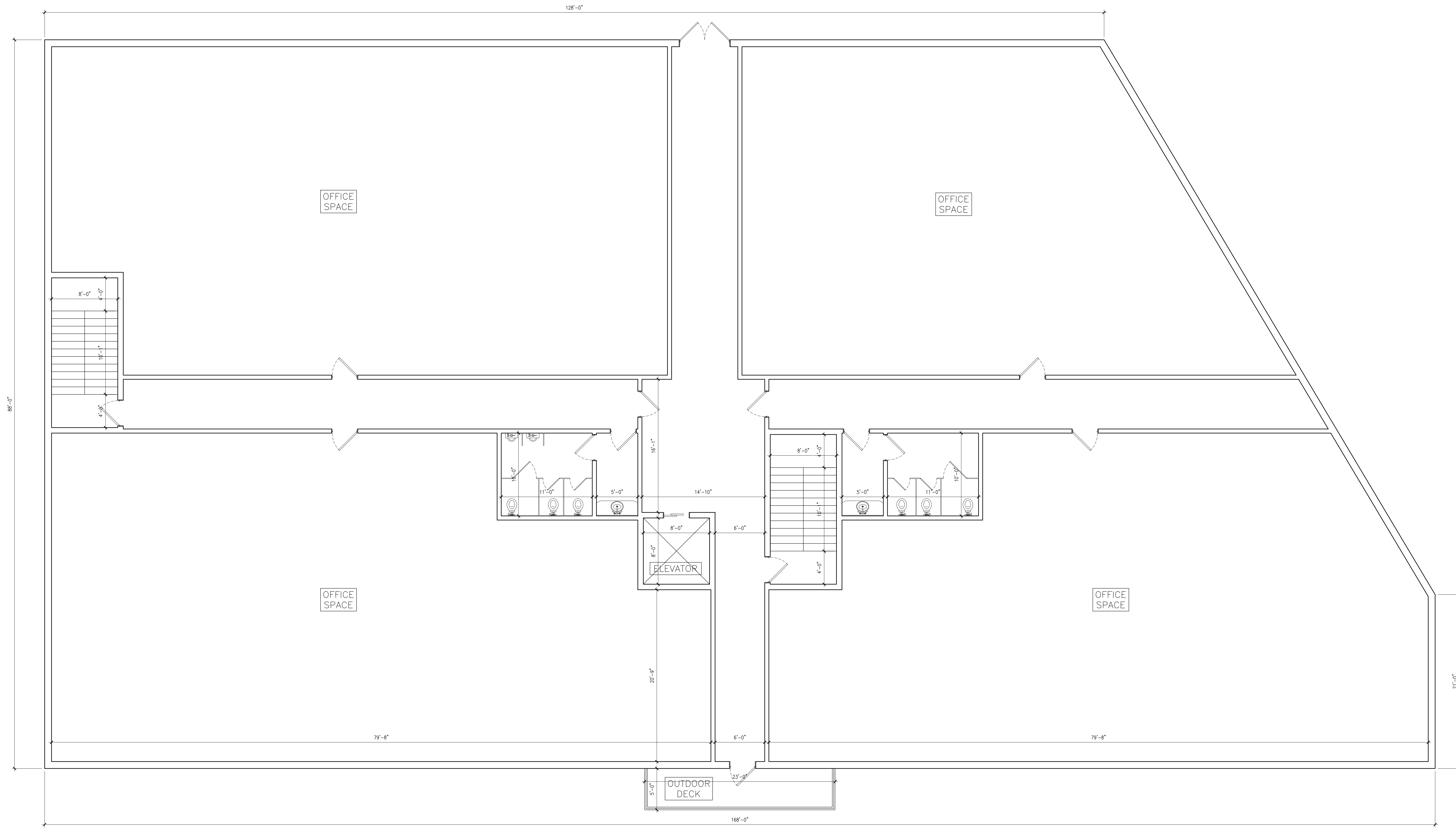


SEAL
LICENSE NO. 42,302

PROPOSED COMMERCIAL BUILDING FOR:
585 CLOVE RD
VILLAGE OF BLOOMING GROVE
ORANGE COUNTY, NEW YORK

Project No. 22-101
Drawn By: LH
Reviewed By: PS
Date: AUG 29, 2022

A-103



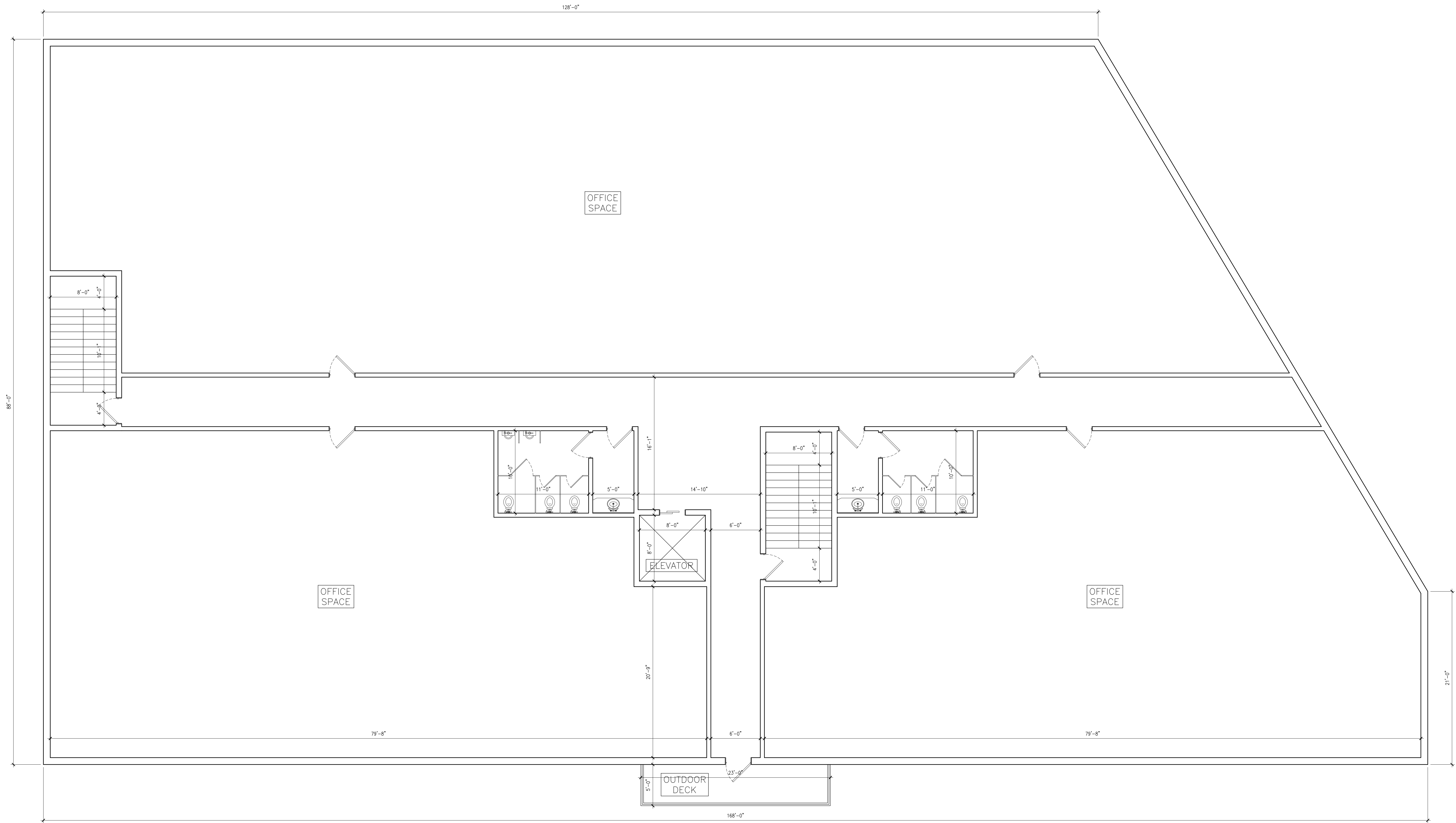
1 FIRST FLOOR PLAN
A-103 SCALE: 3/16" = 1'-0"



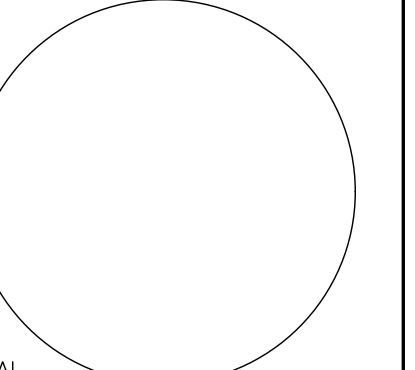
PROPOSED COMMERCIAL BUILDING FOR:
585 CLOVE RD
 VILLAGE OF BLOOMING GROVE
 ORANGE COUNTY, NEW YORK

Project No. 22-101
 Drawn By: LH
 Reviewed By: PS
 Date: AUG 29, 2022

A-104



1 SECOND FLOOR PLAN
 A-104 SCALE: 3/16" = 1'-0"

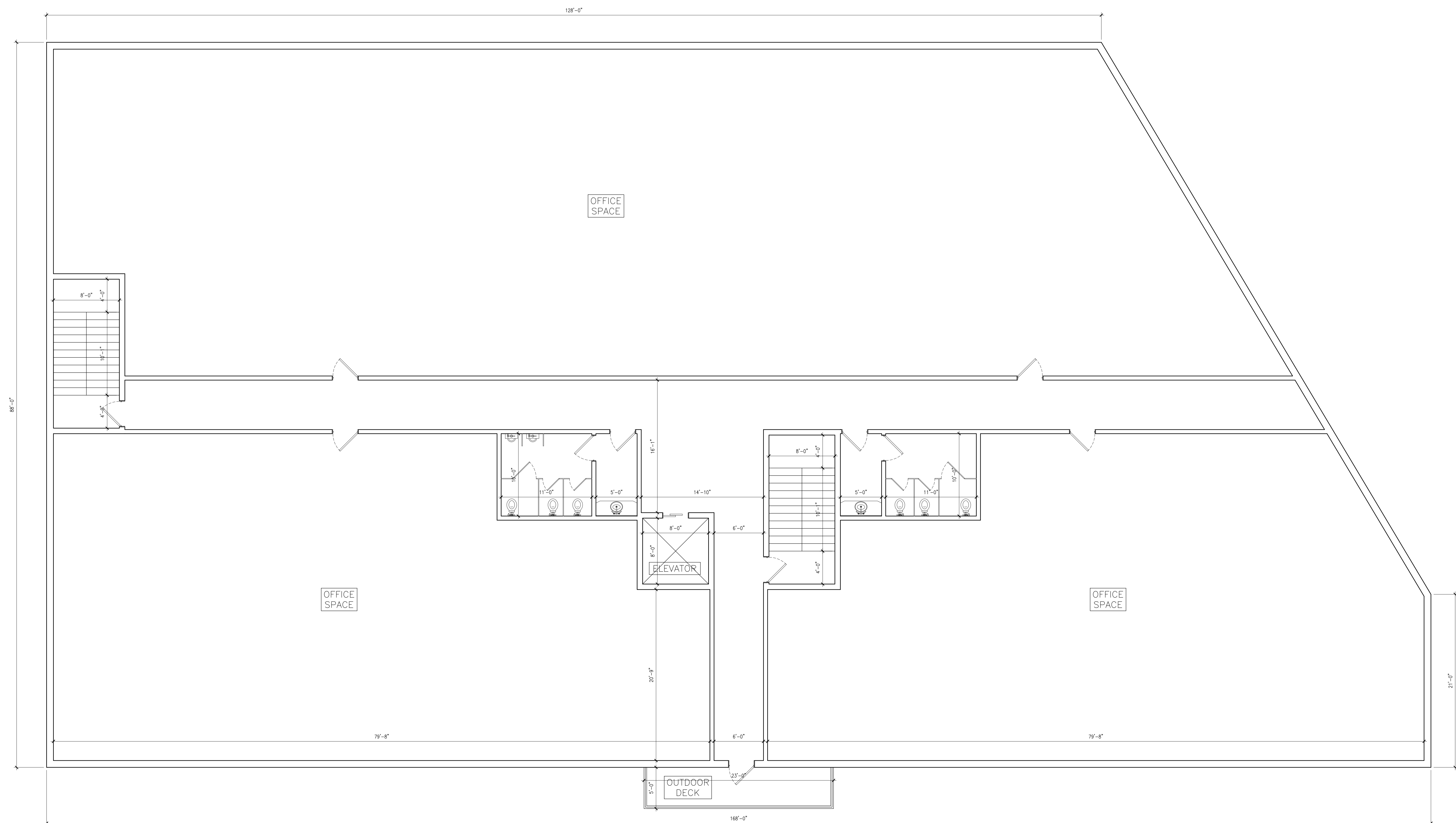


SEAL
LICENSE NO. 42302

PROPOSED COMMERCIAL BUILDING FOR:
585 CLOVE RD
VILLAGE OF BLOOMING GROVE
ORANGE COUNTY, NEW YORK

Project No. 22-101
Drawn By: LH
Reviewed By: PS
Date: AUG 29, 2022

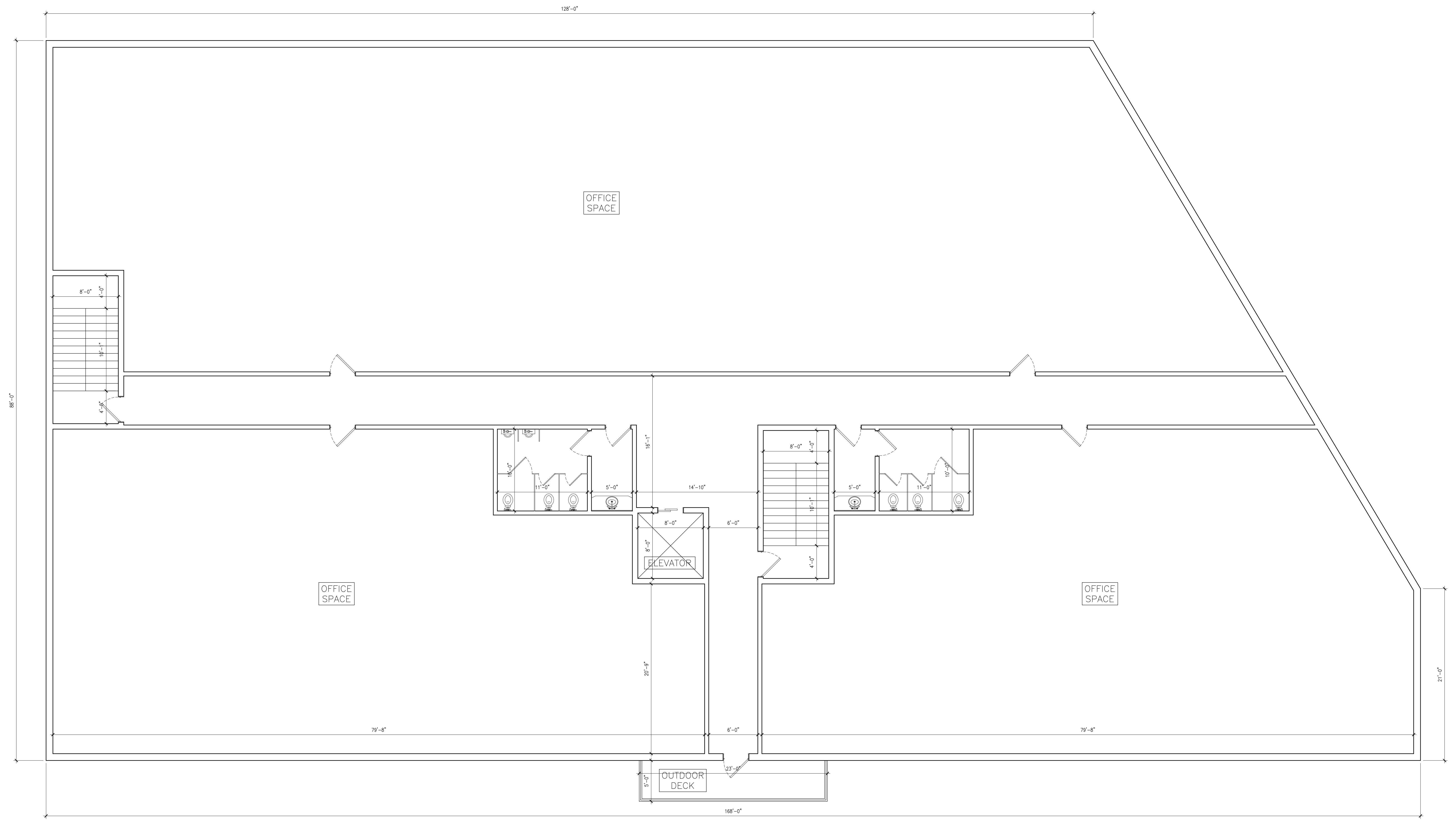
A-105



1 THIRD FLOOR PLAN
A-105 SCALE: 3/16" = 1'-0"

PROPOSED COMMERCIAL BUILDING FOR:
585 CLOVE RD
 VILLAGE OF BLOOMING GROVE
 ORANGE COUNTY, NEW YORK

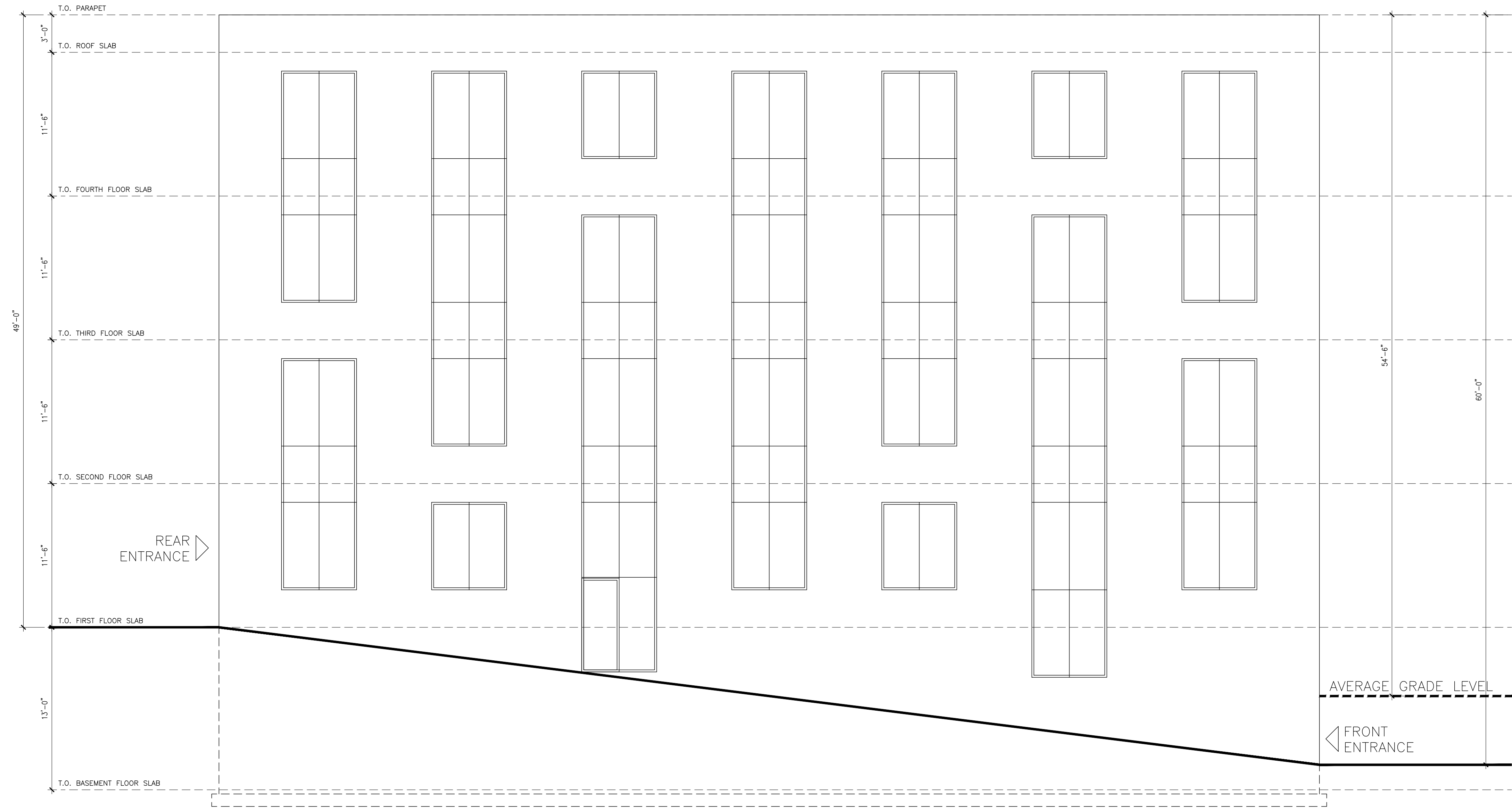
Project No. 22-101
 Drawn By: LH
 Reviewed By: PS
 Date: AUG 29, 2022



1 FOURTH FLOOR PLAN
 A-106 SCALE: 3/16" = 1'-0"

PROPOSED COMMERCIAL BUILDING FOR:
585 CLOVE RD
 VILLAGE OF BLOOMING GROVE
 ORANGE COUNTY, NEW YORK

Project No. ---101
 Drawn By: LH
 Reviewed By: PS
 Date: AUG 29, 2022



1 LEFT ELEVATION
 A-202 SCALE: 3/16" = 1'-0"