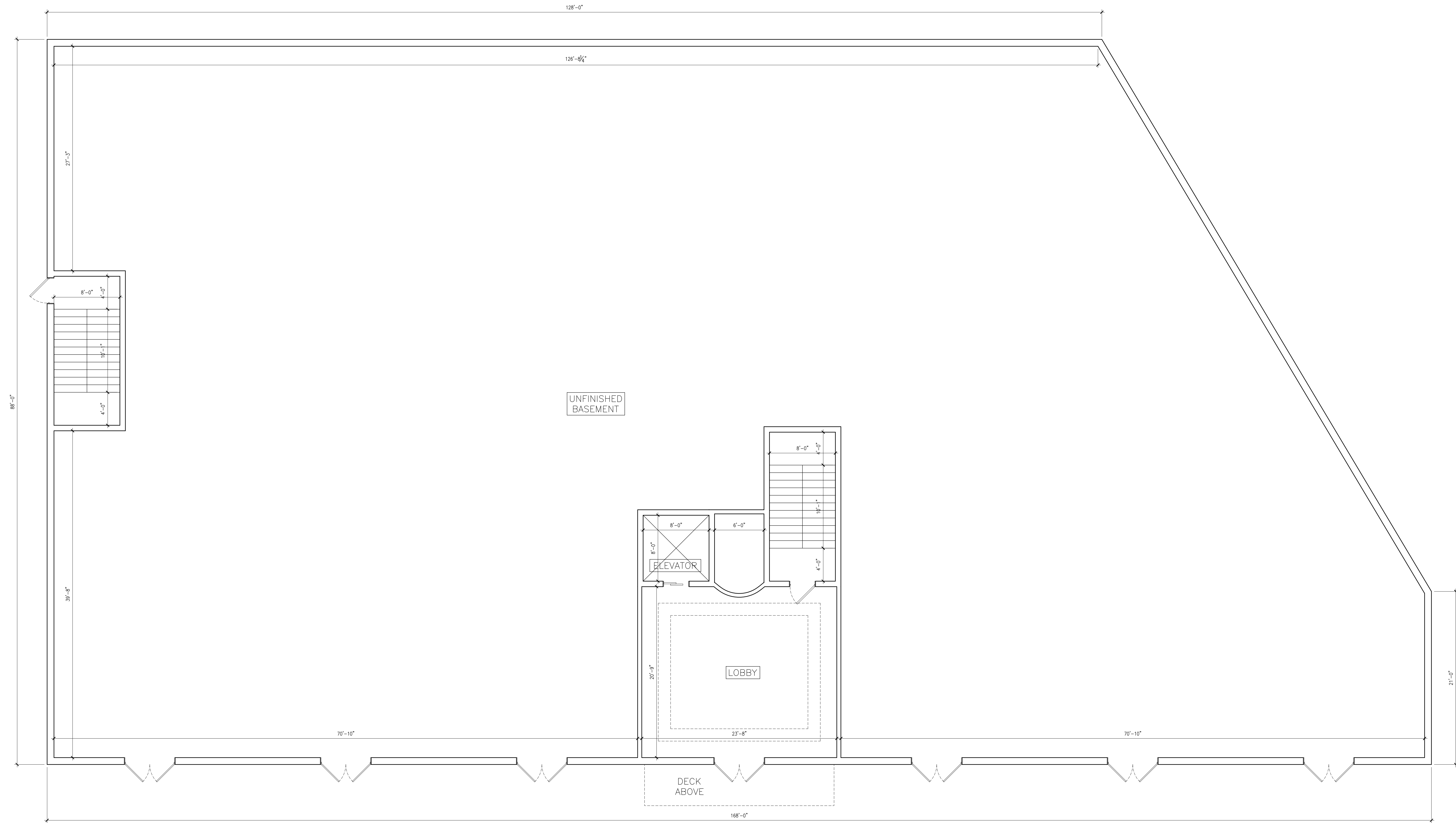


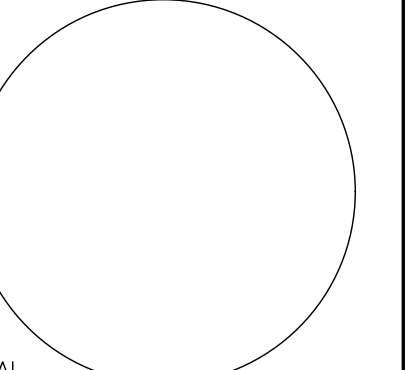
PROPOSED COMMERCIAL BUILDING FOR:  
**585 CLOVE RD**  
 VILLAGE OF BLOOMING GROVE  
 ORANGE COUNTY, NEW YORK

Project No. 22-101  
 Drawn By: LH  
 Reviewed By: PS  
 Date: AUG 9, 2022

**A-102**



**1** BASEMENT FLOOR PLAN  
 A-102 SCALE: 3/16" = 1'-0"

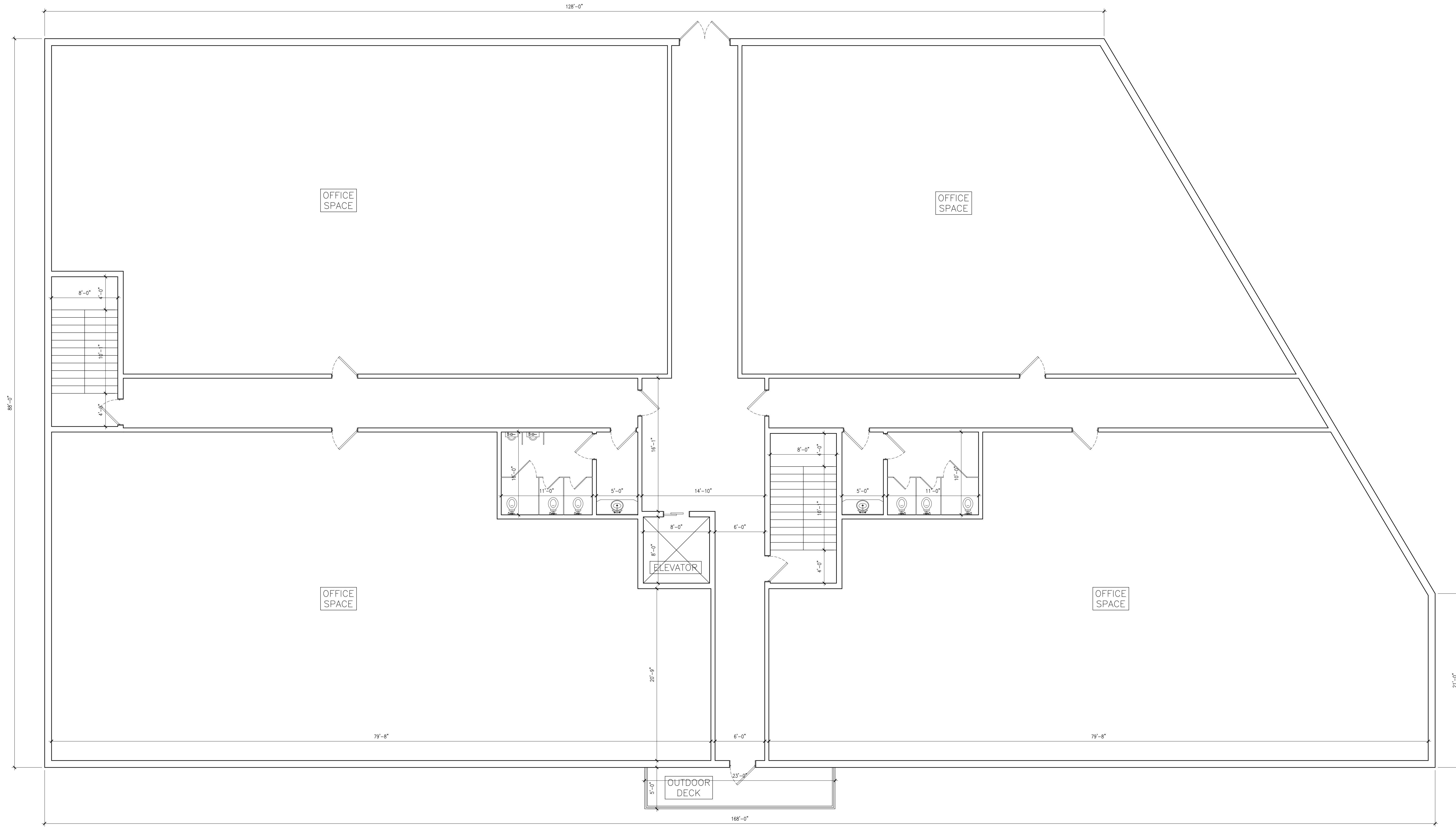


SEAL  
LICENSE NO. 42302

PROPOSED COMMERCIAL BUILDING FOR:  
**585 CLOVE RD**  
VILLAGE OF BLOOMING GROVE  
ORANGE COUNTY, NEW YORK

Project No. 22-101  
Drawn By: LH  
Reviewed By: PS  
Date: AUG 9, 2022

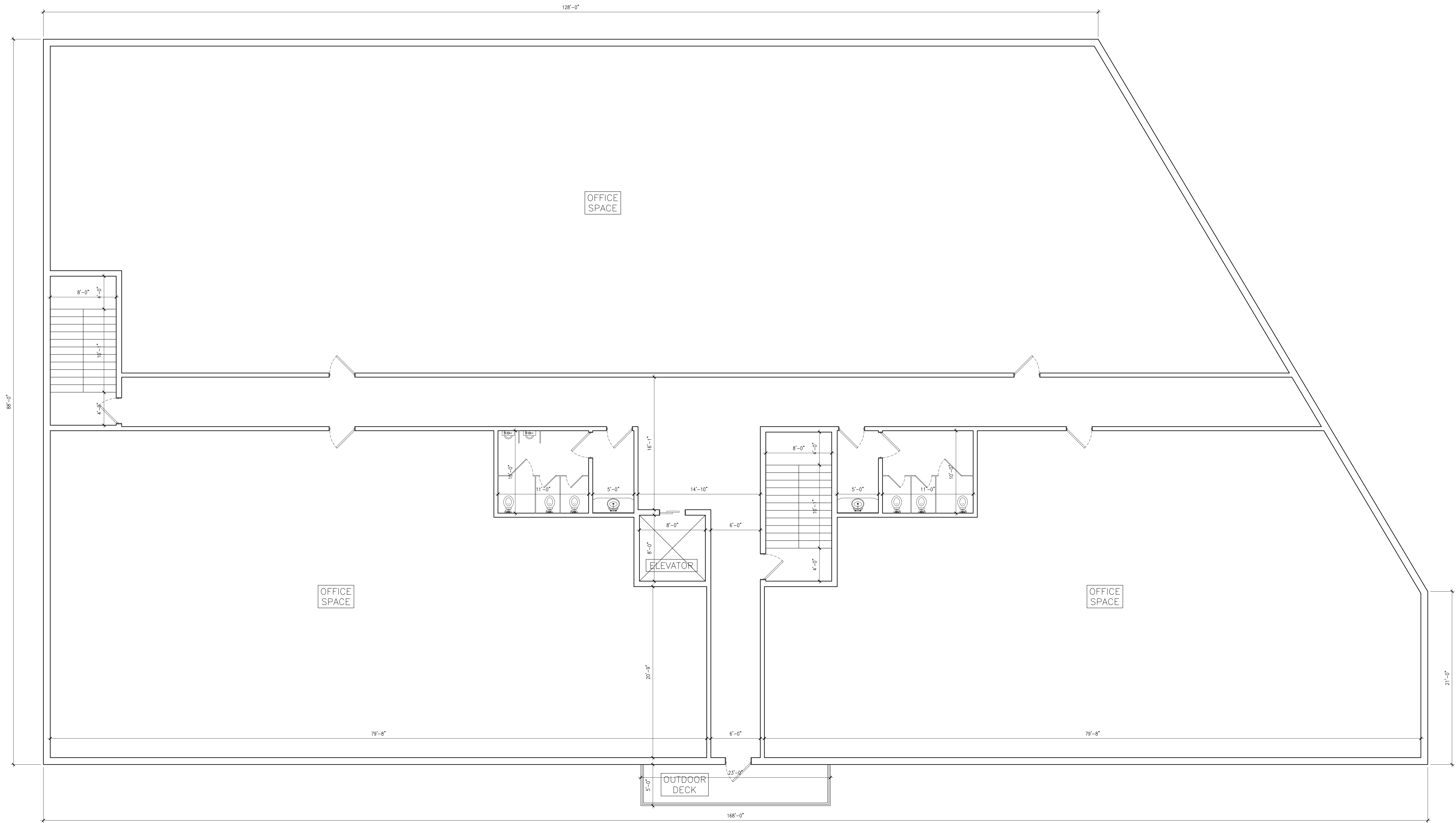
**A-103**



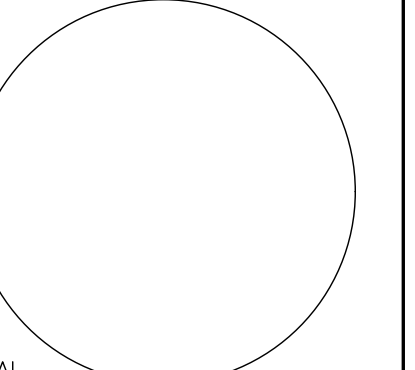
1 FIRST FLOOR PLAN  
A-103 SCALE: 3/16" = 1'-0"

PROPOSED COMMERCIAL BUILDING FOR:  
**585 CLOVE RD**  
 VILLAGE OF BLOOMING GROVE  
 ORANGE COUNTY, NEW YORK

Project No. 22-101  
 Drawn By: LH  
 Reviewed By: PS  
 Date: AUG 9, 2022



**1** SECOND FLOOR PLAN  
 A-104 SCALE: 3/16" = 1'-0"

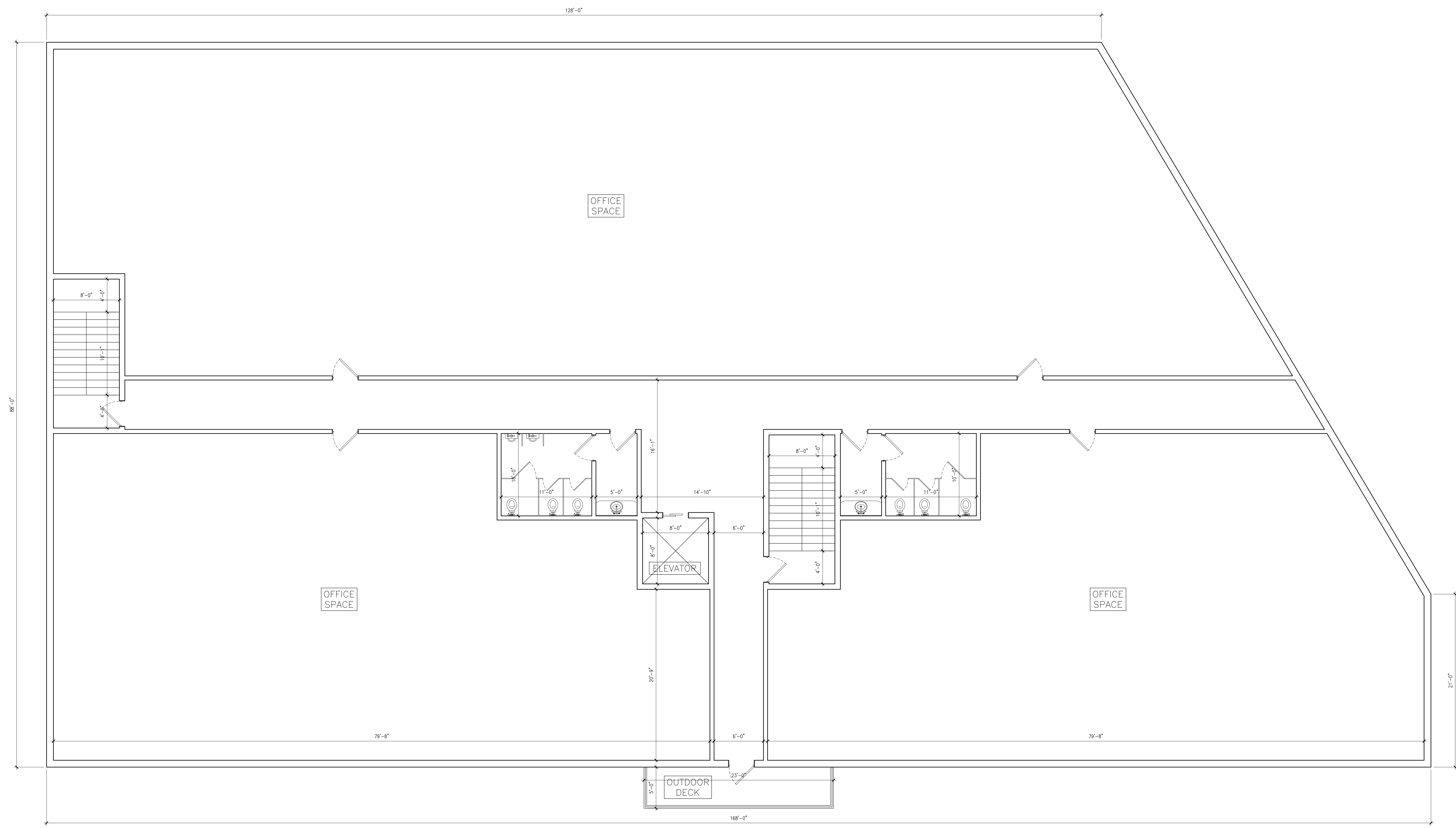


SEAL  
LICENSE NO. 42302

PROPOSED COMMERCIAL BUILDING FOR:  
**585 CLOVE RD**  
VILLAGE OF BLOOMING GROVE  
ORANGE COUNTY, NEW YORK

Project No. 22-101  
Drawn By: LH  
Reviewed By: PS  
Date: AUG 9, 2022

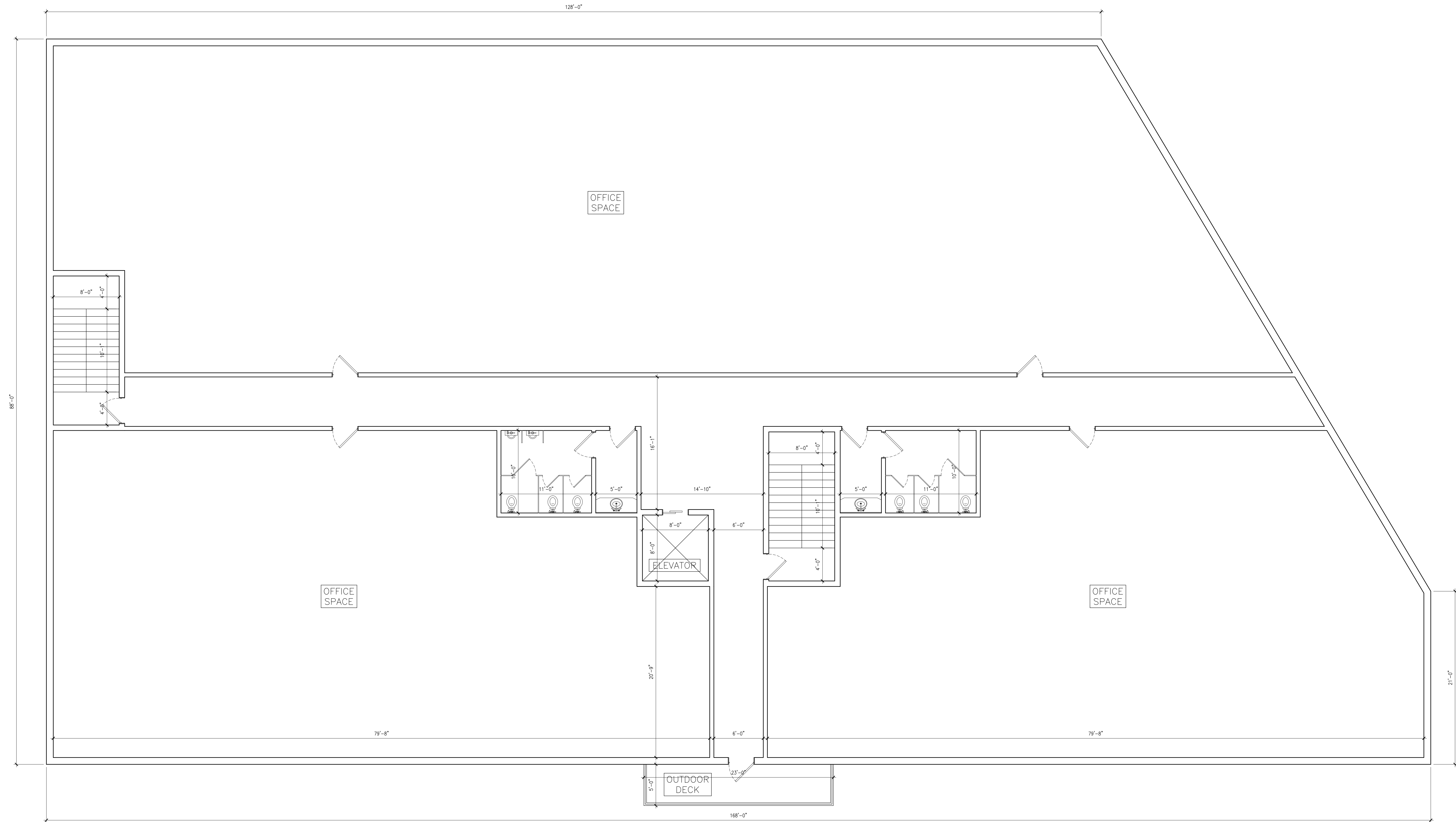
A-105



1 THIRD FLOOR PLAN  
A-105 SCALE: 3/16" = 1'-0"

PROPOSED COMMERCIAL BUILDING FOR:  
**585 CLOVE RD**  
 VILLAGE OF BLOOMING GROVE  
 ORANGE COUNTY, NEW YORK

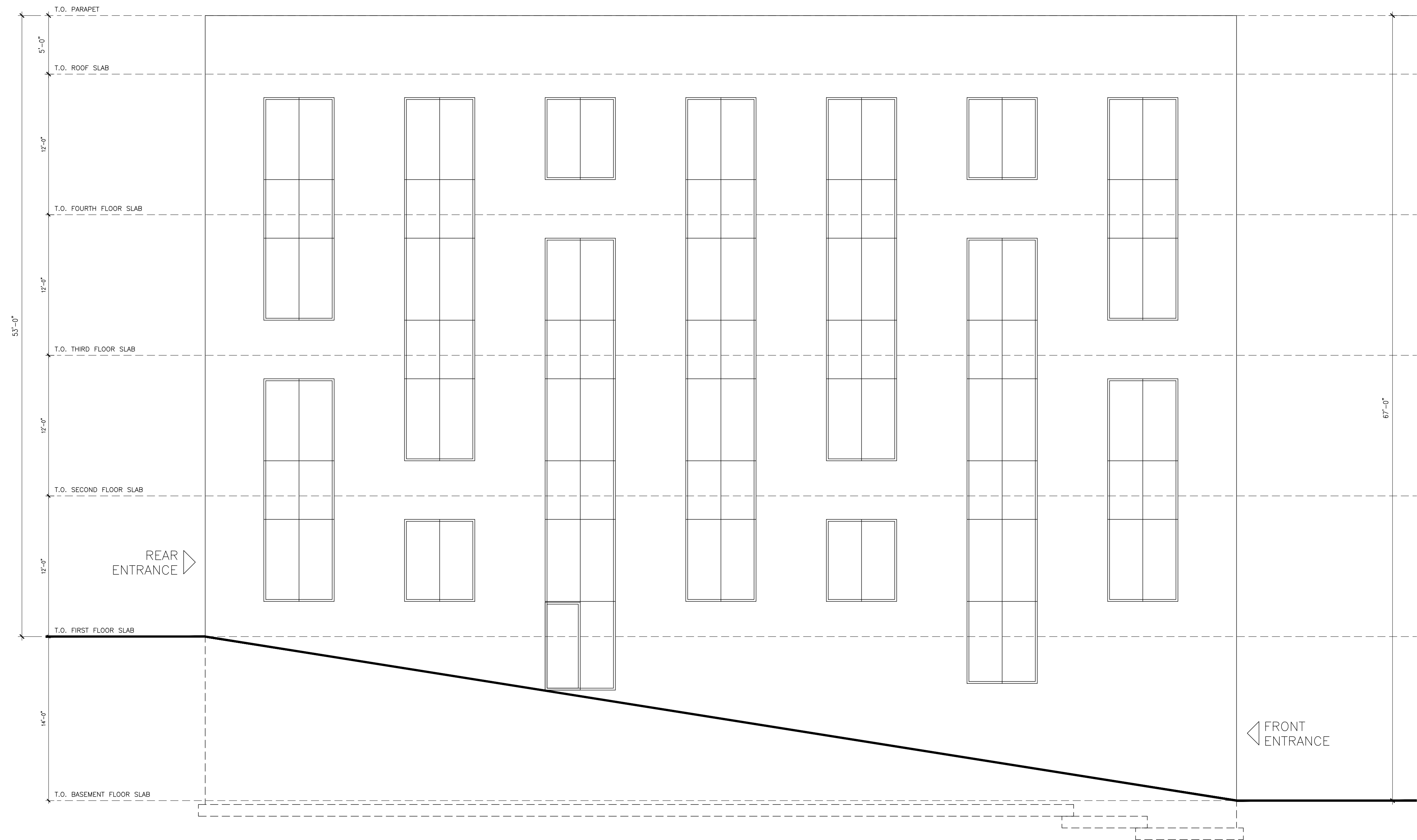
Project No. 22-101  
 Drawn By: LH  
 Reviewed By: PS  
 Date: AUG 9, 2022



**1** FOURTH FLOOR PLAN  
 A-106 SCALE: 3/16" = 1'-0"

PROPOSED COMMERCIAL BUILDING FOR:  
**585 CLOVE RD**  
 VILLAGE OF BLOOMING GROVE  
 ORANGE COUNTY, NEW YORK

Project No. ---101  
 Drawn By: LH  
 Reviewed By: PS  
 Date: AUG 9, 2022



1 LEFT ELEVATION  
 A-202 SCALE: 3/16" = 1'-0"