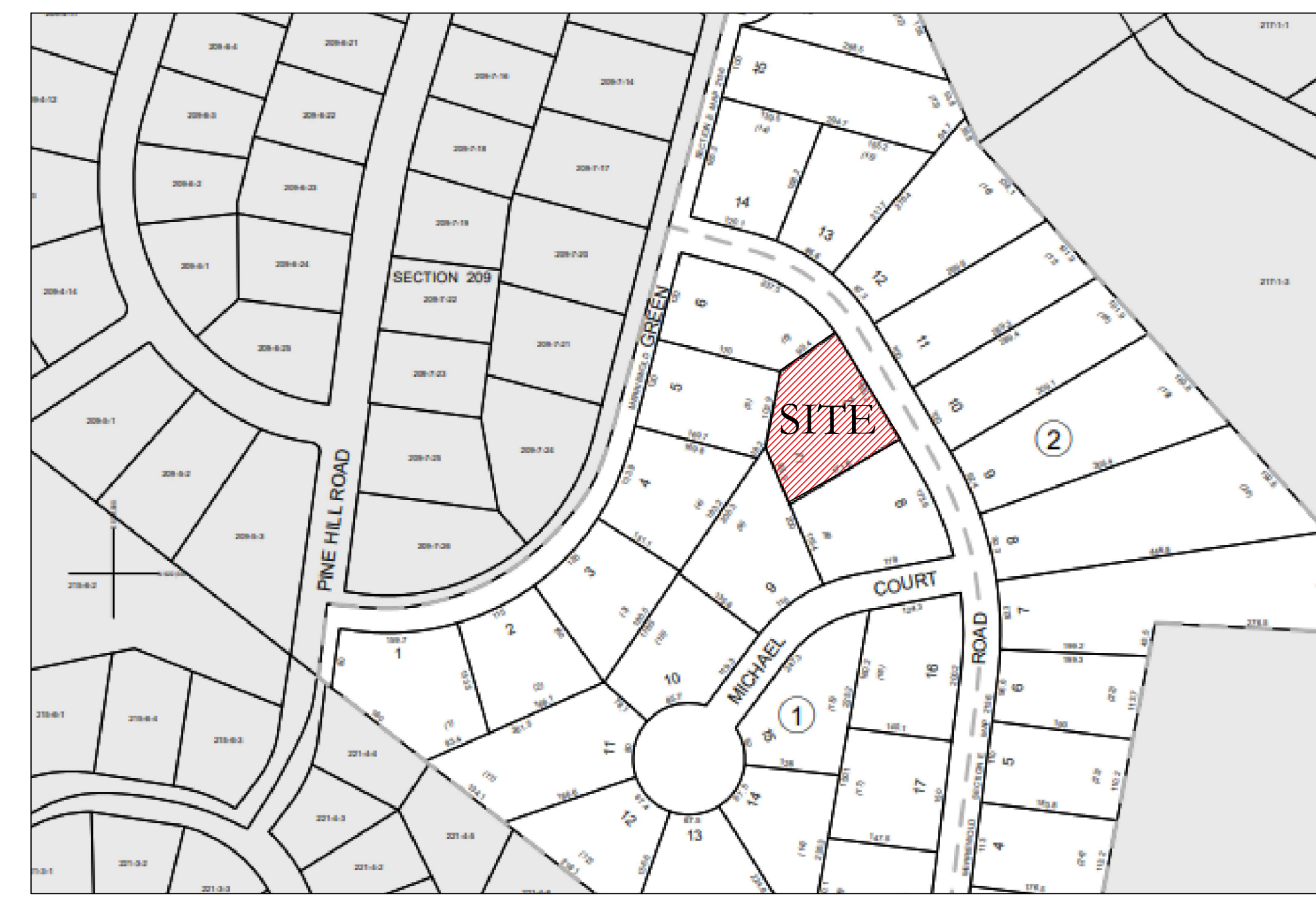


1
SD-1
PROPOSED SUBDIVISION PLAN
SCALE: 1" = 40'



2
SD-1
SITE LOCATION
SCALE: 1" = 40'

GENERAL NOTES
THIS MAP IS BASED ON A FIELD SURVEY
BY JOHN W. MCCORD, SR. DATED 10/06/2023

REQUIREMENTS	REQUIRED	PROVIDE LOT #1	PROVIDE LOT #2
LOT AREA	10,000 SF	13,287 SF	10,294 SF
FRONT YARD	40 FEET	40 FEET	40 FEET
SIDE YARD	15 FEET	15 FEET	15 FEET
REAR YARD	40 FEET	40 FEET	40 FEET

PROJECT:

PROPOSED SUBDIVISION FOR:
SEARS CORNER DEVELOPMENT
Village of South Blooming Grove,
Orange County, New York

SD-1